



## June Agent Newsletter



### **Year-round agent support**

#### **Tools, collaboration and more**

We know that your next few months will be busy with AEP preparation, including carrier certifications. As always, we're here to assist you. Every month in this newsletter, we'll keep you updated on the Medicare landscape, the Optum networks and resources to help you succeed. If you have questions or need any added support, please reach out to your local growth team member. Our highly knowledgeable teammates look forward to working with you.

[Contact our team](#)

## Brand transition network crosswalk

	Pre-rebrand name	Post-rebrand name
Santa Clara County	Northern California Physicians Network (NCPN)	Optum Care Network-San Jose NCPN
	Physicians Medical Group of San Jose (PMGSJ)	Optum Care Network-Greater Bay Area
San Diego County	Scripps Physicians Medical Group (SPMG) / San Diego Physicians Medical Group (SDPMG)	Optum Care Network-SDPMG

### Rebrand update: New resources available For San Diego and Santa Clara County

On June 9, these physician networks transitioned to the Optum name and brand:

- Northern California Physicians Network
- Physicians Medical Group of San Jose
- Scripps Physicians Medical Group/San Diego Physicians Medical Group

On the Optum Network Care Finder, you can now search PCPs and specialists from all of these networks. You'll also find new resources to help you navigate these networks under the "Agent Resources" tab. If you have any questions, contact your local growth team member.

[Visit the Care Finder](#)

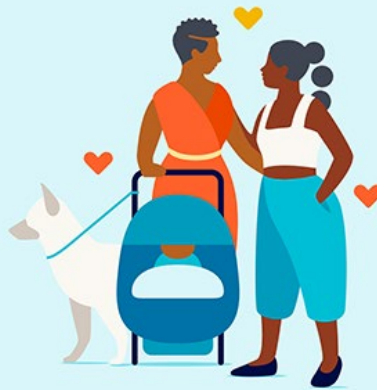


## Team-based care in our owned clinics

### More ways for patients to get care

To give patients in our networks more ways to access quality care, we recently launched team-based care at 13 of our owned clinics in LA and Orange counties. In this model of care, PCPs partner with a nurse practitioner (NP) or physician assistant (PA). This creates more flexible appointment options for patients, who can schedule with either their PCP or the NP/PA on their care team. If a member is part of this program, they will receive a letter from us in the mail. You can view that letter [here](#).

Get the details



## Our commitment to inclusive care

### Through Pride Month and beyond

Earlier this month, we marched proudly in the LA Pride parade. While we're honored to participate in Pride Month activities like this, we also know the importance of upholding our commitment to inclusivity year-round. One way we help do so is through our LGBTQ+ certification program. Providers who complete this program get specialized training on the physical and mental health needs of the LGBTQ+ community. They also have experience caring for LGBTQ+ patients. Meet our LGBTQ+ experienced providers below.

See the providers



## The newest PCPs in our SoCal networks

### Ready to boost your clients' health

A healthier patient can make a happier client. The 2,500+ PCPs in our SoCal networks support both. To help you find the right doctor for your clients, we're highlighting some of the employed PCPs who've recently joined our networks. Among them is Alexis Galschiodt, DO. At our Optum - Euclid clinic in Anaheim, Dr. Galschiodt's understanding approach helps her build trust and empower her patients to make informed health choices. Meet some of the newest employed PCPs in your service area below.

[Discover more PCPs](#)

## Agent Resources



**Care Finder:** Get all the resources below and search our network of PCPs [here](#).

**Agent Guide:** Learn about all things Optum, including our member resources, contracted hospitals and accepted health plans [here](#).

**Growth Team contacts:** Meet the Optum team dedicated to supporting you [here](#).

**Health plans:** View the list of the health plans we accept in each of our SoCal networks [here](#).

For agent use only. This communication is not for distribution as a marketing material to the general public. This communication is going to all eligible subscribers and other individuals who have requested receipt of this newsletter. This communication is not indicative of condition or interest.

This message was sent by Optum | 1 Optum Circle, Eden Prairie, MN 55344, USA  
[info@optum.com](mailto:info@optum.com) | [optum.com](https://optum.com) | © 2025 Optum, Inc. All rights reserved.